

ONE FINANCIAL
plaza

501 North Broadway
Saint Louis, Missouri 63102

Suite 1200

Approximately 21,076 Sq. Ft.

- Top floor offers great downtown views
- Entire space has been white boxed including new lights and ceiling grid
- Prominent entrance at elevator lobby
- Dramatic barrel vault windows
- Lobby and common area on 12th floor under renovation

CONTACT **TONY KENNEDY**
314.241.1175 | TONY.KENNEDY@EVSRA.COM

CONTACT **WILLIAM STENGER**
314.241.1175 | WILLIAM.STENGER@EVSRA.COM

Leased exclusively by
EVS Realty Advisors, Inc.
701 Market Street, Suite 1230
Saint Louis, MO 63101
314.241.1175
www.evsra.com



realty advisors, inc.

Not to Scale

On the Web at www.evsra.com/properties.html

PARMENTER REALTY PARTNERS





ONE FINANCIAL
plaza

501 North Broadway
Saint Louis, Missouri 63102

Suite 1000

Approximately 19,786 Sq. Ft.

- Lobby entrance
- Handsome finishes
- Offers fabulous downtown views
- Efficient existing layout
- Can be easily subdivided

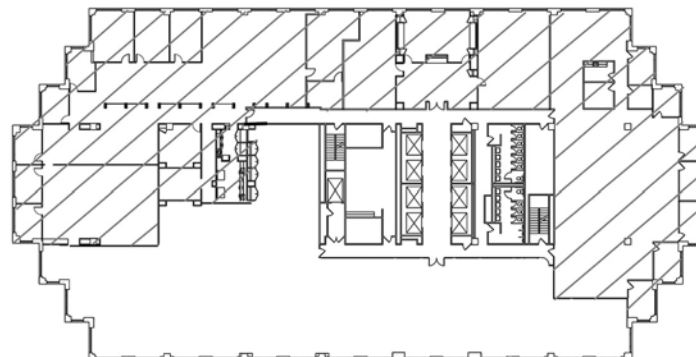
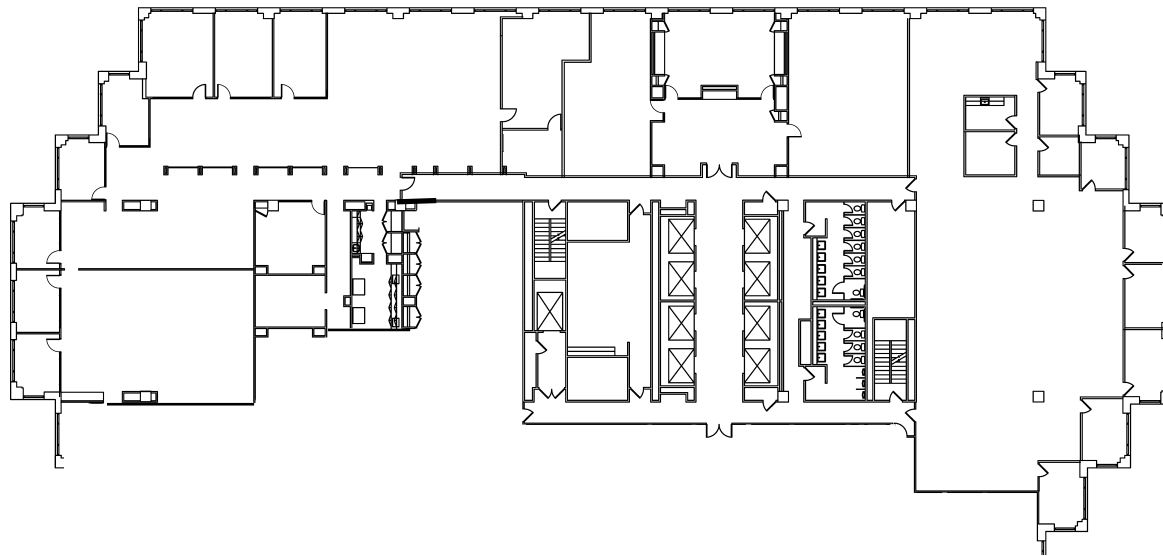
CONTACT **TONY KENNEDY**
314.241.1175 | TONY.KENNEDY@EVSRA.COM

CONTACT **WILLIAM STENGER**
314.241.1175 | WILLIAM.STENGER@EVSRA.COM

Leased exclusively by
EVS Realty Advisors, Inc.
701 Market Street, Suite 1230
Saint Louis, MO 63101
314.241.1175
www.evsra.com



realty advisors, inc.

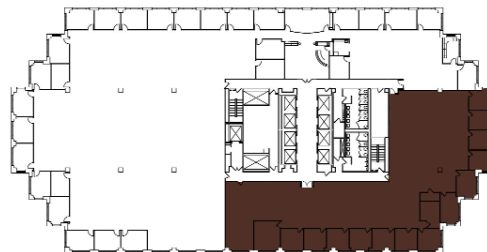
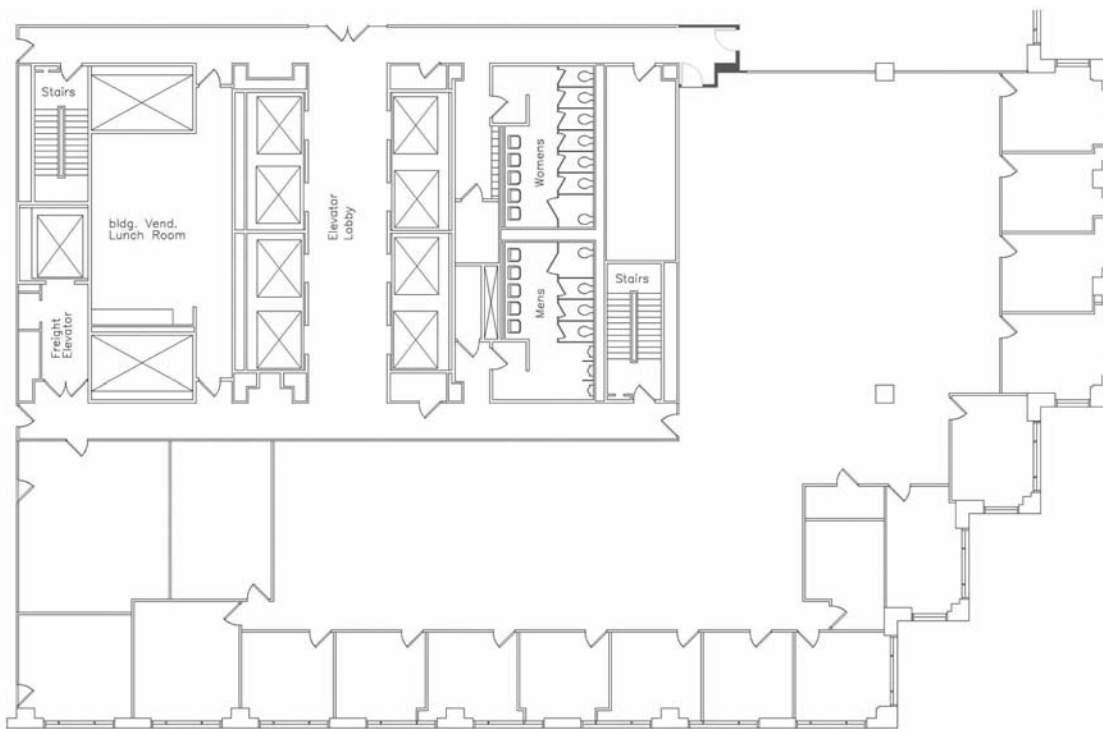


Not to Scale

On the Web at www.evsra.com/properties.html


PARMENTER REALTY PARTNERS





ONE FINANCIAL *plaza*

501 North Broadway
Saint Louis, Missouri 63102

Suite 650

Approximately 9,276 Sq. Ft.

- Prominent entrance at elevator lobby
- Fully furnished
- 15 existing offices on window line
- Move-in ready

CONTACT **TONY KENNEDY**
314.241.1175 | TONY.KENNEDY@EVSRA.COM

CONTACT **WILLIAM STENGER**
314.241.1175 | WILLIAM.STENGER@EVSRA.COM

Leased exclusively by
EVS Realty Advisors, Inc.
701 Market Street, Suite 1230
Saint Louis, MO 63101
314.241.1175
www.evsra.com



realty advisors, inc.

Not to Scale

On the Web at www.evsra.com/properties.html


PARMENTER REALTY PARTNERS

