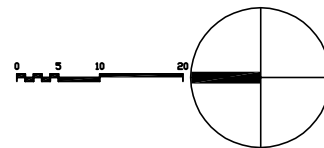


[www.riverportlakes.com](http://www.riverportlakes.com)



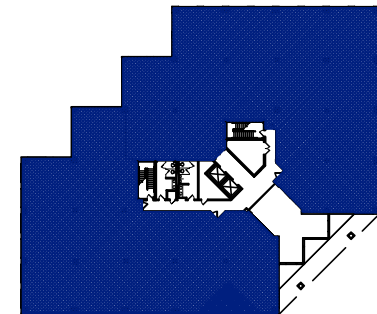
RIVERPORT  
LAKES

*The Natural Place for Business*

## Suite 200

Approximate Square Footage: 18,533 r.s.f.

- Great views
- Ample window line
- Available immediately

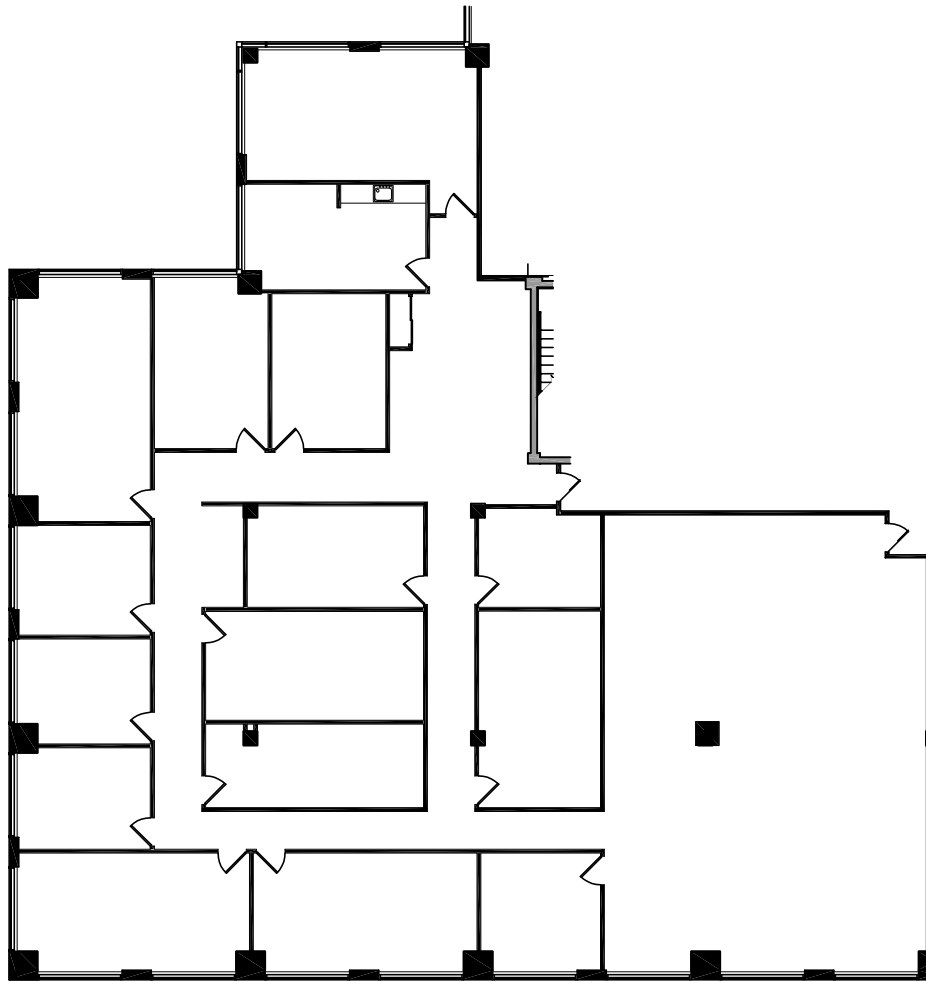


Key Plan

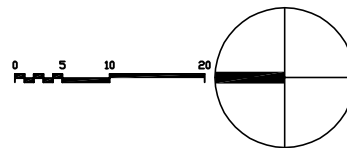
Leased exclusively by  
EVS Realty Advisors, Inc.  
For information contact:  
Susan Finney  
314.963.0123  
[susan.finney@evsra.com](mailto:susan.finney@evsra.com) or [todd.sortor@evsra.com](mailto:todd.sortor@evsra.com)



[realty advisors, inc.](http://www.realtyadvisors.com)



[www.riverportlakes.com](http://www.riverportlakes.com)



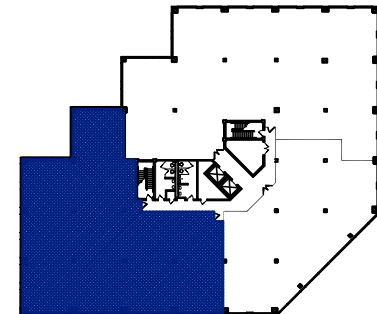
RIVERPORT  
LAKES

*The Natural Place for Business*

## Suite 303

Approximate Square Footage: 7,380 r.s.f.

- Great views
- Ample window line
- Available immediately

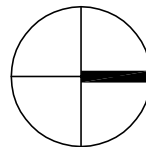
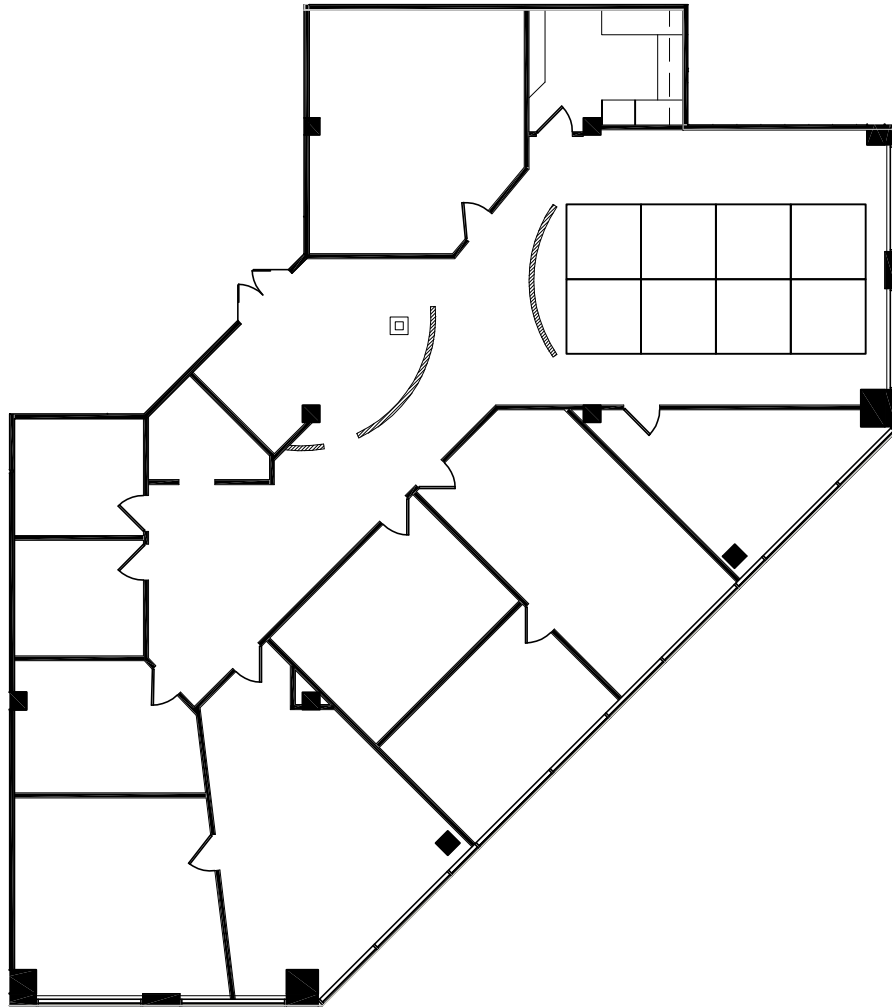


Key Plan

Leased exclusively by  
EVS Realty Advisors, Inc.  
For information contact:  
Susan Finney  
314.963.0123  
[susan.finney@evsra.com](mailto:susan.finney@evsra.com) or [todd.sortor@evsra.com](mailto:todd.sortor@evsra.com)



[realtyadvisors.com](http://realtyadvisors.com)



[www.riverportlakes.com](http://www.riverportlakes.com)



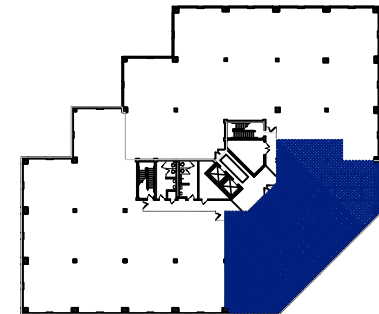
RIVERPORT  
LAKES

*The Natural Place for Business*

## Suite 301

Approximate Square Footage: 4,491 r.s.f.

- Great views
- Efficient layout
- Ample window line



Key Plan

Leased exclusively by  
EVS Realty Advisors, Inc.  
For information contact:  
Susan Finney  
314.963.0123  
[susan.finney@evsra.com](mailto:susan.finney@evsra.com)



realty advisors, inc.