



Class A Space



Prestigious Image



Superb Views

## Summary of Space Available

Suite 1400 - 13,675 sq. ft.; will subdivide

Suite 200 - 6,100 sq. ft.; will subdivide

### Rental Rate

\$22.00 per sq. ft.

## Building Features

- ◆ Unmatched corporate visibility and views
- ◆ Beautiful lobby and plaza
- ◆ Underground parking and on-site visitor parking
- ◆ 24-hour security
- ◆ Gio's Ristorante & Bar
- ◆ 6 North Cafe
- ◆ Sundry shop
- ◆ Gateway Summit conference facilities on top floor with video conferencing
- ◆ Region's Bank with 24-hour ATM
- ◆ Vinciguerra Jewelers
- ◆ Document Copy Services
- ◆ Shoe shine, dry cleaning and car detailing services
- ◆ On-site storage
- ◆ On-site management

## Building Awards

- ◆ 2008 Regional TOBY Award Recipient
- ◆ Cityscape Award Recipient



**GATEWAY ONE**

*St. Louis' Premier Address*

[www.gatewayone.com](http://www.gatewayone.com)

## Area Highlights

- ◆ Central location in the CBD with easy highway access
- ◆ Adjacent to Kiener Plaza and the CityGarden
- ◆ Walk to a wide variety of restaurants and hotels
- ◆ Numerous parking choices
- ◆ Short walk to city, civil and federal courts
- ◆ St. Louis sports venues are a short walk away

## Green Efforts

- ◆ Energy efficient T-8's in parking garage, energy efficient LED bulbs in elevators, energy efficient ceiling lights
- ◆ Recycling/green cleaning products/e-recycle drive
- ◆ Participant in AmerenUE's Energy Efficiency Program

## For Information Contact

TONY KENNEDY

314.241.1175 | [TONY.KENNEDY@EVSRA.COM](mailto:TONY.KENNEDY@EVSRA.COM)

*Exclusively leased and managed by:*

EVS Realty Advisors, Inc.  
 701 Market Street  
 Suite 1230  
 Saint Louis, MO 63101  
 314.241.1175  
[www.evsra.com](http://www.evsra.com)





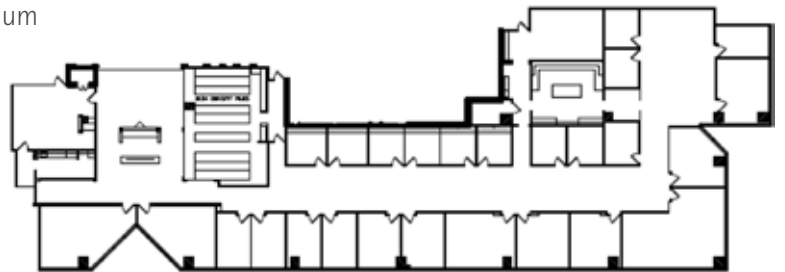
St. Louis' Premier Address

[www.gatewayone.com](http://www.gatewayone.com)

## FEATURING

### Suite 1400; 13,675 Sq. Ft.

- Beautiful, prominent lobby
- Recently remodeled
- Outstanding views of the Gateway Arch and Busch Stadium



For Information Contact

TONY KENNEDY

314.241.1175 | [TONY.KENNEDY@EVSRA.COM](mailto:TONY.KENNEDY@EVSRA.COM)